



Eastport, The Hamptons, West Horsley. KT24 6AX

A sumptuous four-bedroom home providing luxurious accommodation within this private development. With functional elegance evidenced throughout the home you will enjoy the conveniences of modern technology coupled with beautifully crafted bathrooms and kitchen.

£1.85 m



Dunemere, The Hamptons, West Horsley. KT24 6AX

Set amongst the rolling hills of the Surrey Hills area of outstanding natural beauty, The Hampton is a development of carefully designed and beautifully built homes created for modern luxury and superior comfort.

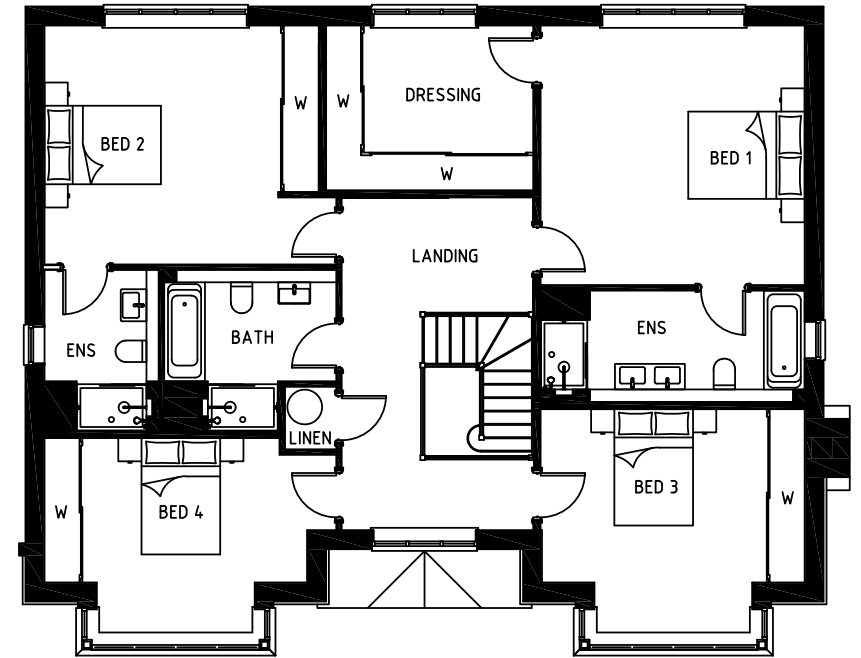
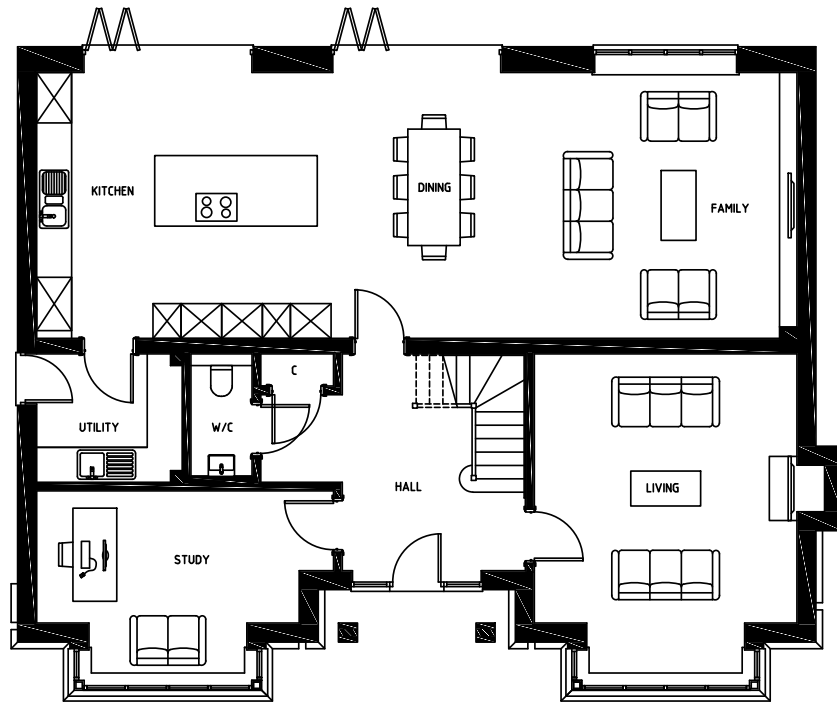
This fabulous four bedroom, three bathroom home with three reception rooms, sits perfectly into the surrounding countryside with this private development. Ample gardens, garage parking and cul-de-sac roads create an oasis of calm.

You, your friends and guests will feel welcome in the open living and dining areas. Hosting parties or feeding the family is a pleasure thanks to kitchen designed for function and elegance. Open floor plans, integrated Miele appliances, and plenty of storage create kitchens that work beautifully and feel like part of the living space.

The home includes the latest in modern technology and convenience with features such as full home automation with Control4 smart systems and underfloor heating for all year comfort. Enjoy strong connectivity with fibre broadband, high speed Cat6 data points, and pre-fitted audio wiring and speaking in the kitchen/dining areas.







Floorplans shown are for approximate measurements only. Exact layouts and sizes may vary. All measurements may vary within a tolerance of 5%. The dimensions are not intended to be used for carpet sizes, appliance sizes or items of furniture. Kitchen layout indicative only.









the-drawing-board.co.uk

Foresters Hall, Newland Road, Worthing. BN11 1LB
01903 33 99 08

hello@the-drawing-board.co.uk



The Drawing Board Property Limited T/A The Drawing Board: Registered in England and Wales:
Registration Number: 12239551 Registered Office: Amelia House, Crescent Road, Worthing. BN11 1RL